

Conferences in Pharmacoepidemiology
by the BPE platform - Hybrid event

14th Bordeaux PharmacoEpi Festival

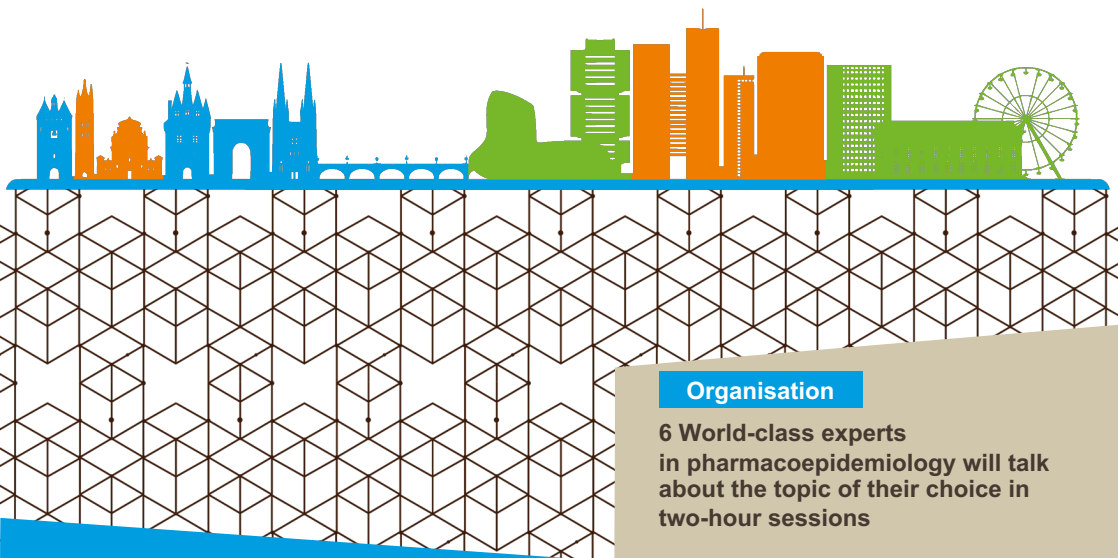
June 11-12, 2026

Venue: Université de Bordeaux

Pôle juridique et judiciaire, Amphithéâtre Ellul

35 place Pey-Berland, 33000 Bordeaux

in-person/live streaming/replay



Organisation

6 World-class experts
in pharmacoepidemiology will talk
about the topic of their choice in
two-hour sessions

Online registration

Contact:

bpe-festival@u-bordeaux.fr





université
de **BORDEAUX**

Thursday, June 11

- 9:45 am** BPE Festival opening > in-person and online
- 10:00 am** **Anna-Maija Tolppanen**, Pharmacoepidemiologist
University of Eastern Finland (Kuopio, Finland)
> **Pharmacoepidemiological studies in neurodegenerative disorders - opportunities and challenges provided by routinely collected healthcare data**
- 12:00 pm** *Lunch break (on your own)* 
- 1:30 pm** **Tobias Gerhard**, Pharmacoepidemiologist
Rutgers Health (New Brunswick, USA)
> **Mental Health Pharmacoepidemiology: Big Opportunities – Big Challenges**
- 3:30 pm** *Coffee break* 
- 3:45 pm** **Ulrike Haug**, Pharmacoepidemiologist
Libniz-Institut-BIPS (Bremen, Germany)
> **Drugs, cancer and longevity - a pharmacoepidemiological perspective**
- 6:00 pm** **Social event** 

Friday, June 12

- 8:15 am** Welcome > in-person and online
- 8:30 am** **Shirley Wang**, Pharmacoepidemiologist
Harvard Medical School (Boston, USA)
> **Lessons from RCT-DUPLICATE: Case Studies in Transparent and Reproducible Trial Emulation**
- 10:30 am** *Coffee break* 
- 10:45 am** **Giorgio Limoncella**, Pharmacoepidemiologist
Bordeaux University (BPE) (Bordeaux, France)
> **Addressing misclassification in case-finding algorithms used in real-world data**
- 12:45 pm** *Lunch break (on your own)* 
- 2:15 pm** **Lianna Ishihara**, RWD epidemiologist
GlaxoSmithKline (London, United Kingdom)
> **Navigating the Global Real-World Data Landscape: Bridging Gaps in Access and Availability**
- 4:15 pm** BPE Festival closing

14th Bordeaux PharmacoEpi Festival

Organised by Bordeaux PharmacoEpi (BPE) platform

Contact and registration

- Université de Bordeaux
BPE - Plateforme de recherche en pharmaco-épidémiologie
CIC Bordeaux CIC1401
Bâtiment du Tondu - case 41
146 rue Léo Saignat - CS 61292
33076 Bordeaux cedex - France
- BPE Festival secretariat
Tel. (+33) 5 57 57 46 75

Online registration



Fees (including replay access to 2025 and 2026 ed.)

	In-person	Virtual
Private Pros	400 €	350 €
Academic Pros / Regulator	250 €	200 €
Student	80 €	70 €
Training with Eu2P certificate of achievement	500 €	

Free registration: FISPE, Honorary members of ISoP, former speakers



Contact

bpe-festival@u-bordeaux.fr



This project has received financial support from the French government within the framework of the France 2030 programme IdEx université de Bordeaux.

